

Early Canid Domestication: The Farm-Fox Experiment: Foxes bred for tamability in a 40-year experiment exhibit remarkable transformations that suggest an interplay between behavioral genetics and development

Author(s): Lyudmila N. Trut

Source: *American Scientist*, Vol. 87, No. 2 (MARCH-APRIL 1999), pp. 160-169

Published by: Sigma Xi, The Scientific Research Honor Society

Stable URL: <https://www.jstor.org/stable/27857815>

Accessed: 24-05-2020 21:28 UTC

JSTOR is a not-for-profit service that helps scholars, researchers, and students discover, use, and build upon a wide range of content in a trusted digital archive. We use information technology and tools to increase productivity and facilitate new forms of scholarship. For more information about JSTOR, please contact support@jstor.org.

Your use of the JSTOR archive indicates your acceptance of the Terms & Conditions of Use, available at <https://about.jstor.org/terms>



Sigma Xi, The Scientific Research Honor Society is collaborating with JSTOR to digitize, preserve and extend access to *American Scientist*

Early Canid Domestication: The Farm-Fox Experiment

Foxes bred for tamability in a 40-year experiment exhibit remarkable transformations that suggest an interplay between behavioral genetics and development

Lyudmila N. Trut

When scientists ponder how animals came to be domesticated, they almost inevitably wind up thinking about dogs. The dog was probably the first domestic animal, and it is the one in which domestication has progressed the furthest—far enough to turn *Canis lupus* into *Canis familiaris*. Evolutionary theorists have long speculated about exactly how dogs' association with human beings may have been linked to their divergence from their wild wolf forebears, a topic that anthropologist Darcy Morey has discussed in some detail in the pages of this magazine (July–August 1994).

As Morey pointed out, debates about the origins of animal domestication tend to focus on “the issue of intentionality”—the extent to which domestication was the result of deliberate human choice. Was domestication actually “self-domestication,” the colonization of new ecological niches by animals such as wolves? Or did it result from intentional decisions by human beings? How you answer those questions will determine how you understand the morphological and physiological changes that domestication has brought about—whether as the results of the pressure of natural selection in a new niche, or as deliberately cultivated advantageous traits.

In many ways, though, the question of intentionality is beside the point. Domestication was not a single event but rather a long, complex process. Natural selection and artificial selection may both have operated at different times or even at the same time. For example, even if prehistoric people deliberately set out to domesticate wolves, natural selection would still have been at work. The selective regime may have changed drastically when wolves started living with people, but selective pressure continued regardless of anything *Homo sapiens* chose to do.

Another problem with the debate over intentionality is that it can overshadow other important questions. For example, in becoming domesticated, animals have undergone a host of changes in morphology, physiology and behavior. What do those changes have in com-

mon? Do they stem from a single cause, and if so, what is it? In the case of the dog, Morey identifies one common factor as *pedomorphosis*, the retention of juvenile traits by adults. Those traits include both morphological ones, such as skulls that are unusually broad for their length, and behavioral ones, such as whining, barking and submissiveness—all characteristics that wolves outgrow but that dogs do not. Morey considers pedomorphosis in dogs a by-product of natural selection for earlier sexual maturity and smaller body size, features that, according to evolutionary theory, ought to increase the fitness of animals engaged in colonizing a new ecological niche.

The common patterns are not confined to a single species. In a wide range of mammals—herbivores and predators, large and small—domestication seems to have brought with it strikingly similar changes in appearance and behavior: changes in size, changes in coat color, even changes in the animals' reproductive cycles. Our research group at the Institute of Cytology and Genetics in Novosibirsk, Siberia, has spent decades investigating such patterns and other questions of the early evolution of domestic animals. Our work grew out of the interests and ideas of the late director of our institute, the geneticist Dmitry K. Belyaev.

Like Morey, Belyaev believed that the patterns of changes observed in domesticated animals resulted from genetic changes that occurred in the course of selection. Belyaev, however, believed that the key factor selected for was not size or reproduction, but behavior—specifically amenability to domestication, or *tamability*. More than any other quality, Belyaev believed, tamability must have determined how well an animal would adapt to life among human beings. Because behavior is rooted in biology, selecting for tameness and against aggression means selecting for physiological changes in the systems that govern the body's hormones and neurochemicals. Those changes, in turn, could have had far-reaching effects on the development of the animals themselves, effects

Lyudmila N. Trut is head of the research group at the Institute of Cytology and Genetics of the Siberian Department of the Russian Academy of Sciences, in Novosibirsk. She received her doctoral degree in 1980. Her current research interests are the patterns of evolutionary transformations at the early steps of animal domestication. Her research group is developing the problem of domestication as an evolutionary event with the use of experimental models, including the silver fox, the American mink, the river otter and the wild gray rat. Address: Institute of Cytology and Genetics of the Russian Academy of Sciences, 630090 Novosibirsk 90, Russia. Internet: iplysn@bionet.nsc.ru.



Figure 1. In the late 1950s, the Russian geneticist Dmitry K. Belyaev began a decades-long effort to breed a population of tame foxes. Belyaev, then director of the Institute of Cytology and Genetics of the U.S.S.R. (now Russian) Academy of Sciences in Novosibirsk, Siberia, hoped to show that physical and morphological changes in domestic animals such as dogs could have resulted from selection for a single behavioral trait, friendliness toward people. Fourteen years after his death, the experiment continues, and the results appear to support Belyaev's hypothesis. (All photographs courtesy of the author.)

that might well explain why different animals would respond in similar ways when subjected to the same kinds of selective pressures.

To test his hypothesis, Belyaev decided to turn back the clock to the point at which animals received the first challenge of domestication. By replaying the process, he would be able to see how changes in behavior, physiology and morphology first came about. Of course, reproducing the ways and means of those ancient transformations, even in the roughest outlines, would be a formidable task. To keep things as clear and simple as possible, Belyaev designed a selective-breeding program to reproduce a single major factor, strong selection pressure for tamability. He chose as his experimental model a species taxonomically close to the dog but never before domesticated: *Vulpes vulpes*, the silver fox. Belyaev's fox-breeding experiment occupied the last 26 years of his life. Today, 14

years after his death, it is still in progress. Through genetic selection alone, our research group has created a population of tame foxes fundamentally different in temperament and behavior from their wild forebears. In the process we have observed some striking changes in physiology, morphology and behavior, which mirror the changes known in other domestic animals and bear out many of Belyaev's ideas.

Belyaev's Hypothesis

Belyaev began his experiment in 1959, a time when Soviet genetics was starting to recover from the anti-Darwinian ideology of Trofim Lysenko. Belyaev's own career had suffered. In 1948 his commitment to orthodox genetics had cost him his job as head of the Department of Fur Animal Breeding at the Central Research Laboratory of Fur Breeding in Moscow. During the 1950s he continued to conduct genetic re-

appearance of dwarf and giant varieties	all
piebald coat color	all
wavy or curly hair	sheep, poodles, donkeys, horses, pigs goats, mice, guinea pigs
rolled tails	dogs, pigs
shortened tails, fewer vertebrae	dogs, cats, sheep
floppy ears	dogs, cats, pigs, horses, sheep, goats, cattle
changes in reproductive cycle	all except sheep

Figure 2. Early in the process of domestication, Darwin noted long ago, animals often undergo similar morphological and physiological changes. Because behavior is rooted in biology, Belyaev believed that selection for behavior implied selection for physiological characteristics that would have broader effects on the animals' development. These effects might explain patterns in the responses of various animals to domestication.

search under the guise of studying animal physiology. He moved to Novosibirsk, where he helped found the Siberian Department of the Soviet (now Russian) Academy of Sciences and became the director of the Department's Institute of Cytology and Genetics, a post he held from 1959 until his death in 1985. Under his leadership the institute became a center of basic and applied research in both classical genetics and modern molecular genetics. His own work included ground-breaking investigations of evolutionary change in animals under extreme conditions (including domestication) and of the evolutionary roles of factors such as stress, selection for behavioral traits and the environmental photoperiod, or duration of natural daylight. Animal domestication was his lifelong project, and fur bearers were his favorite subjects.

Early in the process of domestication, Belyaev noted, most domestic animals had undergone the same basic morphological and physiological changes. Their bodies changed in size and proportions, leading to the appearance of dwarf and giant breeds. The normal pattern of coat color that had evolved as camouflage in the wild altered as well. Many domesticated animals are piebald, completely lacking pigmentation in specific body areas. Hair turned wavy or curly, as it has done in Astrakhan sheep, poodles, domestic donkeys, horses, pigs, goats and even laboratory mice and guinea pigs. Some animals' hair also became longer (Angora type) or shorter (rex type).

Tails changed, too. Many breeds of dogs and pigs carry their tails curled up in a circle or semicircle. Some dogs, cats and sheep have short tails resulting from a decrease in the number of tail vertebrae. Ears became floppy. As Darwin noted in chapter 1 of *On the Origin of Species*, "not a single domestic animal can be named which has not in some country drooping ears"—a feature not found in any wild animal

except the elephant. Another major evolutionary consequence of domestication is loss of the seasonal rhythm of reproduction. Most wild animals in middle latitudes are genetically programmed to mate once a year, during mating seasons cued by changes in daylight. Domestic animals at the same latitudes, however, now can mate and bear young more than once a year and in any season.

Belyaev believed that similarity in the patterns of these traits was the result of selection for amenability to domestication. Behavioral responses, he reasoned, are regulated by a fine balance between neurotransmitters and hormones at the level of the whole organism. The genes that control that balance occupy a high level in the hierarchical system of the genome. Even slight alterations in those regulatory genes can give rise to a wide network of changes in the developmental processes they govern. Thus, selecting animals for behavior may lead to other, far-reaching changes in the animals' development. Because mammals from widely different taxonomic groups share similar regulatory mechanisms for hormones and neurochemistry, it is reasonable to believe that selecting them for similar behavior—tameness—should alter those mechanisms, and the developmental pathways they govern, in similar ways.

For Belyaev's hypothesis to make evolutionary sense, two more things must be true. Variations in tamability must be determined at least partly by an animal's genes, and domestication must place that animal under strong selective pressure. We have looked into both questions. In the early 1960s our team studied the patterns and nature of tamability in populations of farm foxes. We cross-bred foxes of different behavior, cross-fostered newborns and even transplanted embryos between donor and host mothers known to react differently to human beings. Our studies showed that about 35 percent of the variations in the foxes' defense response to the ex-

perimenter are genetically determined. To get some idea of how powerful the selective pressures on those genes might have been, our group has domesticated other animals, including river otters (*Lutra lutra*) and gray rats (*Rattus norvegicus*) caught in the wild. Out of 50 otters caught during recent years, only eight of them (16 percent) showing weak defensive behavior made a genetic contribution to the next generation. Among the gray rats, only 14 percent of the wild-caught yielded offspring living to adulthood. If our numbers are typical, it is clear that domestication must place wild animals under extreme stress and severe selective pressure.

The Experiment

In setting up our breeding experiment, Belyaev bypassed that initial trauma. He began with 30 male foxes and 100 vixens, most of them from a commercial fur farm in Estonia. The founding foxes were already tamer than their wild relatives. Foxes had been farmed since the beginning of this century, so the earliest steps of domestication—capture, caging and isolation from other wild foxes—had already left their marks on our foxes' genes and behavior.

From the outset, Belyaev selected foxes for tameness and tameness alone, a criterion we have scrupulously followed. Selection is strict; in recent years, typically not more than 4 or 5 percent of male offspring and about 20 percent of female offspring have been allowed to breed. To ensure that their tameness results from genetic selection, we do not train the foxes. Most of them spend their lives in cages and are allowed only brief "time dosed" contacts with human beings. Pups are caged with their mothers until they are 1½ to 2 months old. Then they are caged with their litter mates but without their mothers. At three months, each pup is moved to its own cage.

To evaluate the foxes for tameness, we give them a series of tests. When a pup is one month old, an experimenter offers it food from his hand while trying to stroke and handle the pup. The pups are tested twice, once in a cage and once while moving freely with other pups in an enclosure, where they can choose to make contact either with the human experimenter or with another pup. The test is repeated monthly until the pups are six or seven months old.

At seven or eight months, when the foxes reach sexual maturity, they are scored for tameness and assigned to one of three classes. The least domesticated foxes, those that flee from experimenters or bite when stroked or handled, are assigned to Class III. (Even Class III foxes are tamer than the calmest farm-bred foxes. Among other things, they allow themselves to be hand fed.) Foxes in Class II let themselves be petted and handled but show no emotionally friendly response to experimenters. Foxes in Class I are friendly toward experimenters, wag-



Figure 3. Piebald coat color is one of the most striking mutations among domestic animals. The pattern is seen frequently in dogs (border collie, top right), pigs, horses and cows. Belyaev's hypothesis predicted that a similar mutation he called *Star*, seen occasionally in farmed foxes, would occur with increasing frequency in foxes selected for tamability. The photograph above shows a fox in the selected population with the *Star* mutation.

ging their tails and whining. In the sixth generation bred for tameness we had to add an even higher-scoring category. Members of Class IE, the "domesticated elite," are eager to establish human contact, whimpering to attract attention and sniffing and licking experimenters like dogs. They start displaying this kind of behavior before they are one month old. By the tenth generation, 18 percent of fox pups were elite; by the 20th, the figure had reached 35 percent. Today elite foxes make up 70 to 80 percent of our experimentally selected population.

Now, 40 years and 45,000 foxes after Belyaev began, our experiment has achieved an array of concrete results. The most obvious of them is a unique population of 100 foxes (at latest count), each of them the product of between 30 and 35 generations of selection. They are unusual animals, docile, eager to please and unmistakably domesticated. When tested in groups in an enclosure, pups compete for atten-



Figure 4. In typical silver foxes, such as those in the founding population of Belyaev's breeding experiment, ears are erect, the tail is low slung and the fur is silver-black, save for the tip of the tail. (All drawings of foxes were made from the author's photographs.)

tion, snarling fiercely at one another as they seek the favor of their human handler. Over the years several of our domesticated foxes have escaped from the fur farm for days. All of them eventually returned. Probably they would have been unable to survive in the wild.

Physical Changes

Physically, the foxes differ markedly from their wild relatives. Some of the differences have obvious links to the changes in their social behavior. In dogs, for example, it is well known that the first weeks of life are crucial for forming primary social bonds with human beings. The "window" of bonding opens when a puppy becomes able to sense and explore its surroundings, and it closes when the pup starts to fear unknown stimuli. According to our studies, nondomesticated fox pups start responding to auditory stimuli on day 16 after birth, and their eyes are completely open by day 18 or 19. On average, our domesticated fox pups respond to sounds two days earlier and open their eyes a day earlier than their nondomesticated cousins. Nondomesticated foxes first show the fear response at 6 weeks of age; domesticated ones show it after 9 weeks or even later. (Dogs show it at 8 to 12 weeks, depending on the breed.) As a result, domesticated pups have more time to become incorporated into a human social environment.

Moreover, we have found that the delayed development of the fear response is linked to changes in plasma levels of corticosteroids, hormones concerned with an animal's adaptation to stress. In foxes, the level of corticosteroids rises sharply between the ages of 2 to 4 months and reach adult levels by the age of 8 months. One of our studies found that the more advanced an animal's selection for domesticated

behavior was, the later it showed the fear response and the later came the surge in its plasma corticosteroids. Thus, selection for domestication gives rise to changes in the timing of the postnatal development of certain physiological and hormonal mechanisms underlying the formation of social behavior.

Other physical changes mirror those in dogs and other domesticated animals. In our foxes, novel traits began to appear in the eighth to tenth selected generations. The first ones we noted were changes in the foxes' coat color, chiefly a loss of pigment in certain areas of the body, leading in some cases to a star-shaped pattern on the face similar to that seen in some breeds of dog. Next came traits such as floppy ears and rolled tails similar to those in some breeds of dog. After 15 to 20 generations we noted the appearance of foxes with shorter tails and legs and with underbites or overbites. The novel traits are still fairly rare. Most of them show up in no more than a few animals per 100 to a few per 10,000. Some have been seen in commercial populations, though at levels at least a magnitude lower than we recorded in our domesticated foxes.

Alternative Explanations

What might have caused these changes in the fox population? Before discussing Belyaev's explanation, we should consider other possibilities. Might rates and patterns of changes observed in foxes be due, for example, to inbreeding? That could be true if enough foxes in Belyaev's founding population carried a recessive mutant gene for the trait along with a dominant normal gene that masked its effects. Such mixed-gene, or *heterozygous*, foxes would have been hidden carriers, unaffected by the mutation themselves but capable of passing it on to later generations.



As Morey pointed out, inbreeding might well have been rampant during the early steps of dog domestication. But it certainly cannot explain the novel traits we have observed in our foxes, for two reasons. First, we designed the mating system for our experimental fox population to prevent it. Through outbreeding with foxes from commercial fox farms and other standard methods, we have kept the inbreeding coefficients for our fox population between 0.02 and 0.07. That means that whenever a fox pup with a novel trait has been born into the herd, the probability that it acquired the trait through inbreeding (that is, by inheriting both of its mutant genes from the same ancestor) has varied between only 2 and 7 percent. Second, some of the new traits are not recessive: They are controlled by dominant or incompletely dominant genes. Any fox with one of those genes would have shown its effects; there could have been no “hidden carriers” in the original population.

Another, subtler possibility is that the novelities in our domesticated population are classic by-products of strong selection for a quantitative trait. In genetics, quantitative traits are characteristics that can vary over a range of possibilities; unlike Gregor Mendel’s peas, which were either smooth or wrinkly with no middle ground, quantitative traits such as an animal’s size, the amount of milk it produces or its overall friendliness toward human beings can be high, low or anywhere in between. What makes selecting for quantitative traits so perilous is that they (or at least the part of them that is genetic) tend to be controlled not by single genes but by complex systems of genes, known as *polygenes*. Because polygenes are so intricate, anything that tampers with them runs the risk of upsetting other parts of an organism’s genetic machinery. In the case of our foxes, a breeding program that alters a poly-

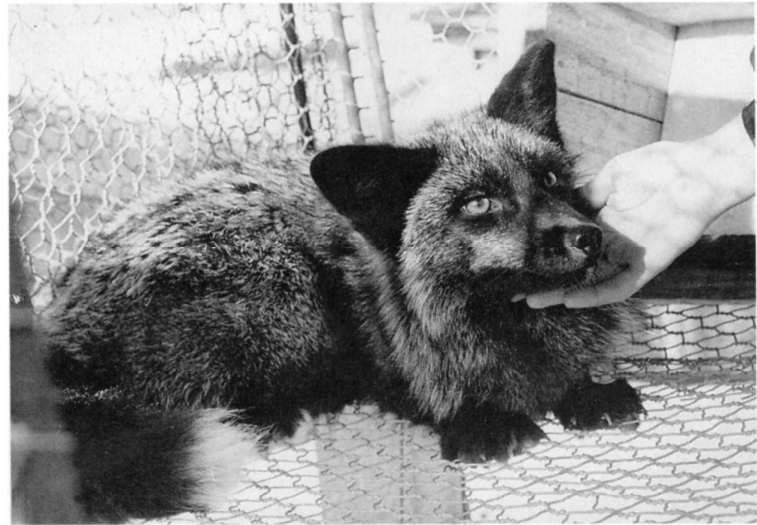


Figure 5. Foxes in Belyaev’s experimental group were selected to breed depending on how they reacted to their human keepers. Vicious foxes (*top left*) were excluded from the experimental population. Foxes showing slight fear and no viciousness toward humans were used in cross-breeding for the next generation (*top right*). Their offspring (*photograph, bottom*) were calm and showed no negative emotional responses to people.

gene might upset the genetic balance in some animals, causing them to show unusual new traits, most of them harmful to the fox. Note that in this argument, it does not matter whether the trait being selected for is tameness or some other quantitative trait. Any breeding program that affects a polygene might have similar effects.

The problem with that explanation is that it does not explain why we see the particular mutations we do see. If disrupted polygenes are responsible, then the effects of a selection experiment ought to depend strongly on which mutations already existed in the population. If Belyaev had started with 130 foxes from, say, North America, then their descen-

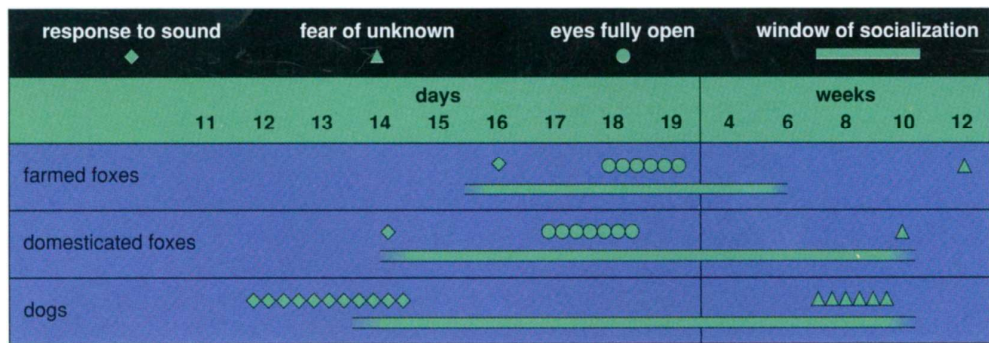


Figure 6. Dogs begin forming social bonds with human beings as soon as they can see and hear; they stop bonding once they start showing fear of the unknown. In foxes bred for tamability, the window of bonding opens earlier and closes later than it does in ordinary farmed foxes.

dants today would have ended up with a completely different set of novelties. Domesticating a population of wolves, or pigs, or cattle ought to produce novel traits more different still. Yet as Belyaev pointed out, when we look at the changes in other domesticated animals, the most striking things about them are not how diverse they are, but how similar. Different animals, domesticated by different people at different times in different parts of the world, appear to have passed through the same morphological and physiological evolutionary pathways. How can that be?

According to Belyaev, the answer is not that domestication selects for a *quantitative* trait but that it selects for a *behavioral* one. He considered genetic transformations of behavior to be the key factor entraining other genetic events. Many of the polygenes determining behavior may be regulatory, engaged in stabilizing an organism's early development, or *ontogenesis*. Ontogenesis is an extremely delicate process. In principle, even slight shifts in the sequence of events could throw it into chaos. Thus the genes that orchestrate those events and keep them on track have a powerful role to play. Which genes are they? Although numerous genes interact to stabilize an organism's development, the lead role belongs to the genes that control the functioning of the neural and endocrine systems. Yet those same genes also govern the systems that control an animal's behavior, including its friendliness or hostility toward human beings. So, in principle, selecting animals for behavioral traits can fundamentally alter the development of an organism.

As our breeding program has progressed, we have indeed observed changes in some of the animals' neurochemical and neurohormonal mechanisms. For example, we have measured a steady drop in the hormone-producing activity of the foxes' adrenal glands. Among several other roles in the body, the adrenal cortex comes into play when an animal has to adapt to stress. It releases hormones such as corticosteroids, which stimulate the body to extract energy from its reserves of fats and proteins.

After 12 generations of selective breeding, the basal levels of corticosteroids in the blood plasma of our domesticated foxes had dropped to slightly more than half the level in a control group. After 28 to 30 generations of selection, the level had halved again. The adrenal cortex in our foxes also responds less sharply when the foxes are subjected to emotional stress. Selection has even affected the neurochemistry of our foxes' brains. Changes have taken place in the serotonin system, thought to be the leading mediator inhibiting animals' aggressive behavior. Compared with a control group, the brains of our domesticated foxes contain higher levels of serotonin; of its major metabolite, 5-oxyindolacetic acid; and of tryptophan hydroxylase, the key enzyme of serotonin synthesis. Serotonin, like other neurotransmitters, is critically involved in shaping an animal's development from its earliest stages.

Selection and Development

Evidently, then, selecting foxes for domestication may have triggered profound changes in the mechanisms that regulate their development. In particular, most of the novel traits and other changes in the foxes seem to result from shifts in the rates of certain ontogenetic processes—in other words, from changes in timing. This fact is clear enough for some of the novelties mentioned above, such as the earlier eye opening and response to noises and the delayed onset of the fear response to unknown stimuli. But it also can explain some of the less obvious ones. Floppy ears, for example, are characteristic of newborn fox pups but may get carried over to adulthood.

Even novel coat colors may be attributable to changes in the timing of embryonic development. One of the earliest novel traits we observed in our domesticated foxes was a loss of pigment in parts of the head and body. Belyaev determined that this piebald pattern is governed by a gene that he named *Star*. Later my colleague Lyudmila Prasolova and I discovered that the *Star* gene affects the migration rate of *melanoblasts*, the embryonic precursors of the pig-

ment cells (*melanocytes*) that give color to an animal's fur. Melanocytes form in the embryonic fox's neural crest and later move to various parts of the embryo's epidermis. Normally this migration starts around days 28 to 31 of the embryo's development. In foxes that carry even a single copy of the *Star* gene, however, melanoblasts pass into the potentially depigmented areas of the epidermis two days later, on average. That delay may lead to the death of the tardy melanoblasts, thus altering the pigmentation in ways that give rise to the distinctive Star pattern.

One developmental trend to which we have devoted particular attention has to do with the growth of the skull. In 1990 and 1991, after noticing abnormal developments in the skulls and jaws of some of our foxes, we decided to study variations in the animals' cranial traits. Of course, changes in the shape of the skull are among the most obvious ways in which dogs differ from wolves. As I mentioned earlier, Morey believes that they are a result of selection (either natural or artificial) for reproductive timing and smaller body size.

In our breeding experiment, we have selected foxes only for behavior, not size; if anything, our foxes may be slightly longer, on average, than the ones Belyaev started with 40 years ago. Nevertheless, we found that their skulls have been changing. In our domesticated foxes of both sexes, cranial height and width tended to be smaller, and snouts tended to be shorter and wider, than those of a control group of farmed foxes.

Another interesting change is that the cranial morphology of domesticated adult males became somewhat "feminized." In farmed foxes, the crania of males tended to be larger in volume than those of females, and various other proportions differed sharply between the sexes. In the domesticated foxes the sexual dimorphism decreased. The differences in volume remained, but in other respects the skulls of males became more like those of females. Analysis of cranial allometry showed that the changes in skull proportions result either from changes in the timing of the first appearance of particular structures or from changes in their growth rates. Because we studied the skulls only of adult foxes, however, we cannot judge whether any of these changes are pedomorphic, as Morey believes they are in dogs.

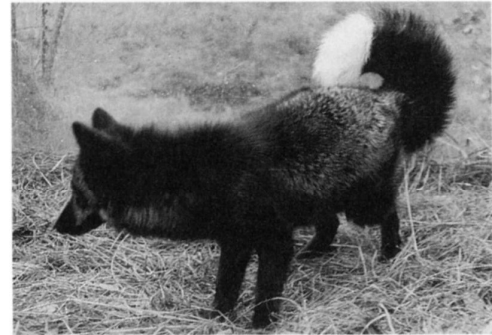
The most significant changes in developmental timing in our foxes may be the smallest ones: those that have to do with reproduction. In the wild, foxes reach sexual maturity when they are about 8 months old. They are strict seasonal breeders, mating once a year in response to changes in the length of the day (in Siberia the mating season runs from late January to late March) and giving birth to litters ranging from one to thirteen pups, with an average of four or five. Natural selection has hard-wired these traits into foxes with little or no genetic varia-



Figure 7. Changes in the foxes' coat color were the first novel traits noted, appearing in the eighth to tenth selected generations. The expression of the traits varied, following classical rules of genetics. In a fox homozygous for the *Star* gene, large areas of depigmentation similar to those in some dog breeds are seen (top). In addition some foxes displayed the brown mottling seen in some dogs, which appeared as a semirecessive trait.

tion. Fur farmers have tried for decades to breed foxes that would reproduce more often than annually, but all their attempts have failed.

In our experimental fox population, however, some reproductive traits have changed in a correlated manner. The domesticated foxes reach sexual maturity about a month earlier than nondomesticated foxes do, and they give birth to litters that are, on average, one pup larger. The mating season has lengthened. Some females breed out of season, in November–December or April–May, and a few of them have mated twice a year. Only a very small number of our vixens have shown such



characteristic	animals per 100,000 with trait		increase in frequency (percent)
	domesticated population	nondomesticated population	
depigmentation (<i>Star</i>)	12,400	710	+1,646
brown mottling	450	86	+423
gray hairs	500	100	+400
floppy ears	230	170	+35
short tail	140	2	+6,900
tail rolled in circle	9,400	830	+1,033

Figure 8. Foxes in the domesticated population show an unusually high incidence of certain other changes, including (clockwise from top left) floppy ears, shortened legs and tails, tails curled upward like dogs', and underbites and overbites. The rates of some common aberrations are compared in the table. In addition to the *Star* depigmentation pattern, the increased incidence of doglike tail characteristics was most marked.

unusual behavior, and in 40 years, no offspring of an extraseasonal mating has survived to adulthood. Nevertheless, the striking fact is that, to our knowledge, out-of-season mating has never been previously observed in foxes experiencing a natural photoperiod.

Lessons Learned

Forty years into our unique lifelong experiment, we believe that Dmitry Belyaev would be pleased with its progress. By intense selective breeding, we have compressed into a few decades an ancient process that originally unfolded over thousands of years. Before our eyes, "the Beast" has turned into "Beauty," as the aggressive behavior of our herd's wild progenitors entirely disappeared. We have watched

new morphological traits emerge, a process previously known only from archaeological evidence. Now we know that these changes can burst into a population early in domestication, triggered by the stresses of captivity, and that many of them result from changes in the timing of developmental processes. In some cases the changes in timing, such as earlier sexual maturity or retarded growth of somatic characters, resemble pedomorphosis.

Some long-standing puzzles remain. We believed at the start that foxes could be made to reproduce twice a year and all year round, like dogs. We would like to understand why this has turned out not to be quite so. We are also curious about how the vocal repertoire of foxes changes under domestication. Some of the calls

of our adult foxes resemble those of dogs and, like those of dogs, appear to be holdovers from puppyhood, but only further study will reveal the details.

The biggest unanswered question is just how much further our selective-breeding experiment can go. The domestic fox is not a domestic dog, but we believe that it has the genetic potential to become more and more doglike. We can continue to increase that potential through further breeding, but the foxes will realize it fully only through close contact with human beings. Over the years, other investigators and I have raised several fox pups in domestic conditions, either in the laboratory or at home as pets. They have shown themselves to be good-tempered creatures, as devoted as dogs but as independent as cats, capable of forming deep-rooted pair bonds with human beings—mutual bonds, as those of us who work with them know. If our experiment should continue, and if fox pups could be raised and trained the way dog puppies are now, there is no telling what sort of animal they might one day become.

Whether that will happen remains to be seen. For the first time in 40 years, the future of our domestication experiment is in doubt, jeopardized by the continuing crisis of the Russian economy. In 1996 the population of our breeding herd stood at 700. Last year, with no funds to feed the foxes or to pay the salaries of our staff, we had to cut the number to 100. Earlier we were able to cover most of our expenses by selling the pelts of the foxes culled from the breeding herd. Now that source of revenue has all but dried up, leaving us increasingly dependent on outside funding at a time when shrinking budgets and changes in the grant-awarding system in Russia are making long-term experiments such as ours harder and harder to sustain. Like many other enterprises in our country, we are becoming more entrepreneurial. Recently we have sold some of our foxes to Scandinavian fur breeders, who have been pressured by animal-rights groups to develop animals that do not suffer stress in captivity. We also plan to market pups as house pets, a commercial venture that should lead to some interesting, if informal, experiments in its own right. Many avenues of both applied and basic research remain for us to pursue, provided we save our unique fox population.

Acknowledgments

This article is dedicated to the memory of Dmitry K. Belyaev. The research was supported by grants RBD000 and RBD300 from the International Scientific Funds, grants 93-04-06936 and 96-04-49972 from the Russian Fund of Fundamental Research, and grant 1757 of the Russian University Fund. The author expresses her gratitude to Anna Fadeeva for translation of the manuscript from Russian into English. She is also grateful to Irina Plysnina for



Figure 9. Forty years into the experiment, between 70 and 80 percent of the foxes bred for tameness are members of the human-friendly “domesticated elite.” When raised as pets, they are devoted, affectionate and capable of forming strong social bonds with people (here, with technical assistant Marina Nurgalieva). The foxes seek out human contact and lick experimenters’ hands and faces. The friendly behavior is evident before the fox pups are a month old.

help during preparation of the manuscript and to Yekaterina Omelchenko for technical assistance.

Bibliography

- Belyaev, D. K. 1969. Domestication of animals. *Science Journal* (U.K.) 5:47–52.
- Belyaev, D. K. 1979. Destabilizing selection as a factor in domestication. *The Journal of Heredity* 70:301–308.
- Belyaev, D. K., A. O. Ruvinsky and L. N. Trut. 1981. Inherited activation-inactivation of the star gene in foxes. *The Journal of Heredity* 72:264–274.
- Belyaev, D. K., and L. N. Trut. 1982. Accelerating evolution. *Science in the USSR* 5:24–29, 60–64.
- Falconer, D. S. 1981. *Introduction to Quantitative Genetics*. New York: Longman.
- Logvinenko, N. S., P. M. Krass, L. N. Trut, L. N. Ivanova and D. K. Belyaev. 1979. Genetics and phenogenetics of hormonal characteristics of animals. V. Influence of domestication on ontogenesis of estrogen- and progesterone-secreting functions of ovaries and adrenals in silver fox females. *Genetica* 15:320–326 (in Russian).
- Morey, D. F. 1994. The early evolution of the domestic dog. *American Scientist* 82:336–347.
- Raff, R. A., and T. C. Kaufman. 1983. *Embryos, Genes and Evolution*. New York: Macmillan Publishing Company.
- Scott, J. P., and J. L. Fuller. 1965. *Genetics and the Social Behavior of the Dog*. Chicago: University of Chicago Press.
- Trut, L. N. 1988. The variable rates of evolution transformations and their parallelism in terms of destabilizing selection. *Journal of Animal Breeding and Genetics* 105:81–90.
- Trut, L. N. 1996. Sex ratio in silver foxes: effects of domestication and the star gene. *Theoretical and Applied Genetics* 92:109–115.
- Wayne, R. K. 1993. Molecular evolution of the dog family. *Trends in Genetics* 9:218–224.
- Zeuner, F. T. 1954. Domestication of animals. In *A History of Technology*, Volume I, ed. C. Singer, E. J. Holmyard, A. R. Hall and T. I. Williams. Oxford: Oxford University Press.

Links to Internet resources for further exploration of “Early Canid Domestication: The Farm-Fox Experiment” are available on the American Scientist Web site:
<http://www.amsci.org/amsci/articles/articles99/trut.html>